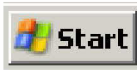


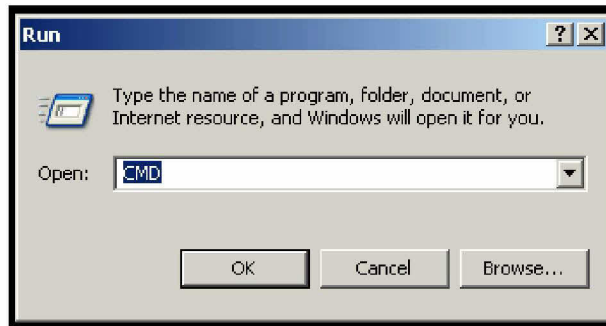
# Kansas Fuel Tax

## File Transfer Procedure

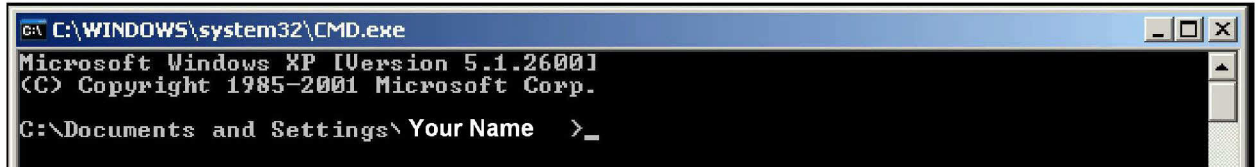
### (DOS)

After converting your file to the EDI format you are now ready to transfer it to the Kansas Department of Revenue.

1. Left click on the start button ; a menu will appear; left click on Run...
2. You now will see a text field box like the one below. Type in **cmd** then left click on the **OK** button.



3. Now you should see a DOS page; it should look something like the picture below; at the end of the text there will be a flashing cursor Type in **cd\** and hit enter.



4. You will now type in where the EDI file is.
  - a. If you are running FUEL TAX you will type after the C:\ **cd FUEL TAX\Data** then hit enter. Note: (type the file path as shown using capital letters where used).
  - b. If you are running FuelTaxE85 you will type after the C:\ **cd FuelTaxE85\Data** then hit enter. Note: (type the file path as shown using capital letters where used).
  - c. If you are running FuelTaxE85 Excel you will type after the C:\ **cd Program File\TMS\FuelTax\Data** then hit enter. Note: (type the file path as shown using capital letters where used).

- The cursor will have moved down and depending on the software it will show where your file is located, Example: C:\FUELTAX\DATA>  
After this the cursor will be flashing. You now should type in **ftp** and hit enter, it will drop down and ftp> with a flashing cursor after it. Type in **open ftp.kdor.org** then hit enter.

```
C:\>cd FUELTAX\DATA
C:\FUELTAX\DATA>ftp
ftp> open ftp.kdor.org
```

- This should then appear

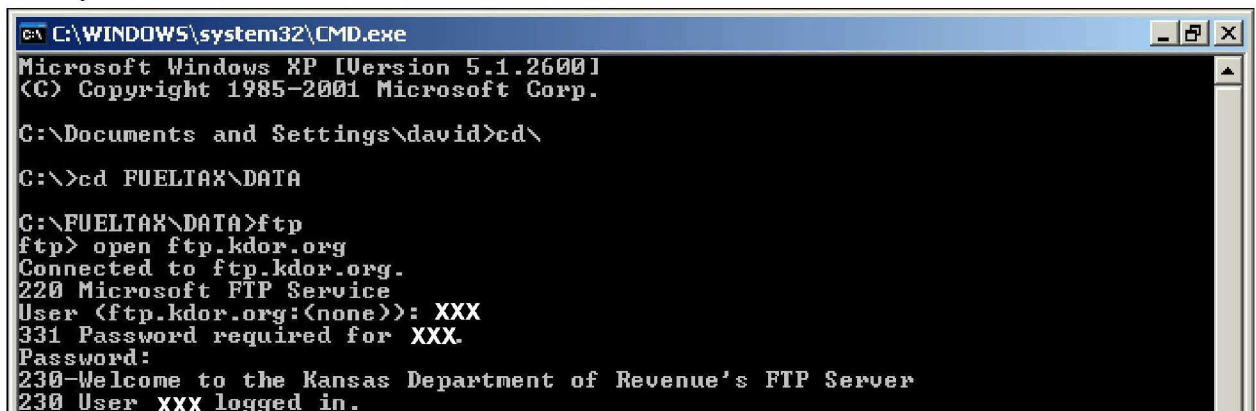
```
Connected to ftp.kdor.org.
220 Microsoft FTP Service
User (ftp.kdor.org:(none)):
```

Type in your 3 digit user name in capital letters then hit enter, you should see

```
331 Password required for
Password:
```

Only your 3 digit user name will appear after the word for.

- Type in your password in capital letters, you will not see what you are typing. After you have done this hit enter. You should see



```
C:\WINDOWS\system32\CMD.exe
Microsoft Windows XP [Version 5.1.2600]
(C) Copyright 1985-2001 Microsoft Corp.

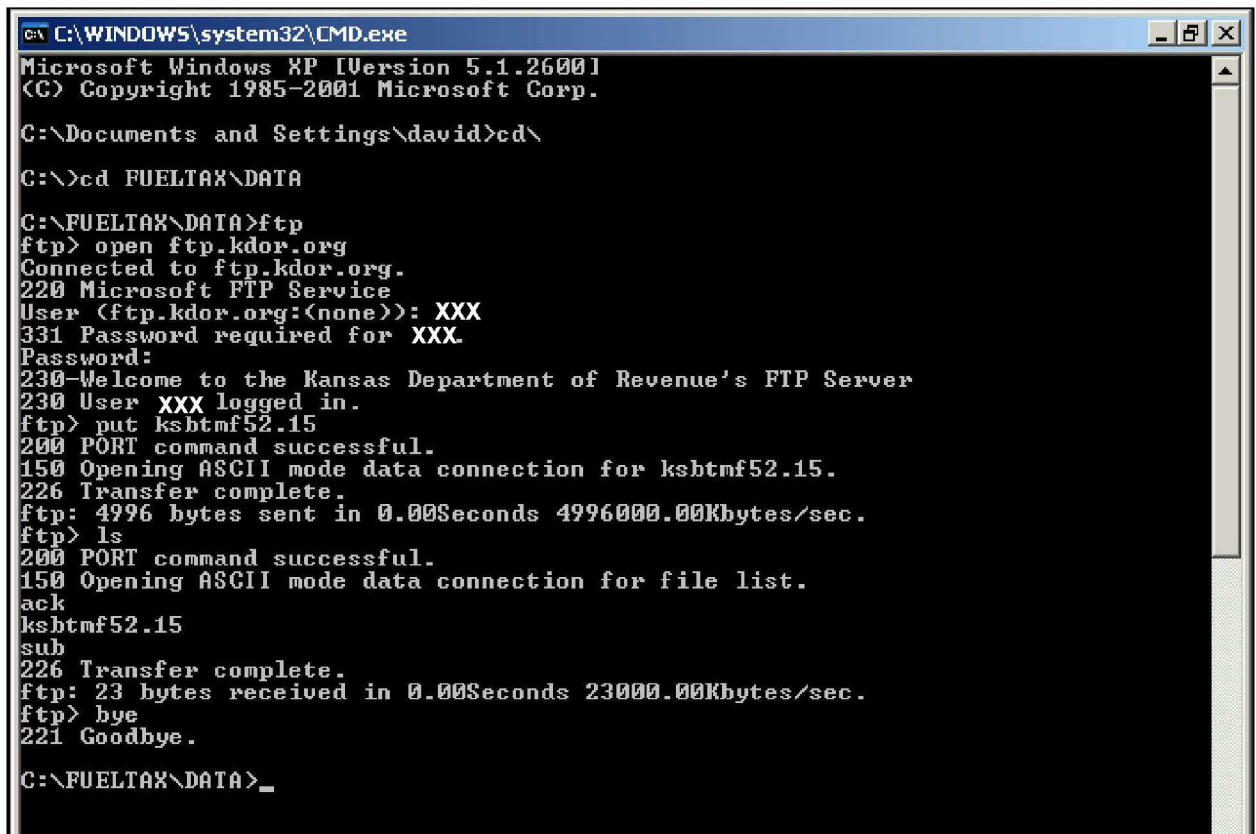
C:\Documents and Settings\david>cd\
C:\>cd FUELTAX\DATA
C:\FUELTAX\DATA>ftp
ftp> open ftp.kdor.org
Connected to ftp.kdor.org.
220 Microsoft FTP Service
User (ftp.kdor.org:(none)): XXX
331 Password required for XXX.
Password:
230>Welcome to the Kansas Department of Revenue's FTP Server
230 User XXX logged in.
```

- The text to the left of the flashing cursor will say ftp>; now type in put and the file name you wish to transfer, **put ksbtmf52.xx** then hit enter. The text below should appear and you will have successfully transmitted your file.

```
230 User XXX logged in.
ftp> put ksbtmf52.15
200 PORT command successful.
150 Opening ASCII mode data connection for ksbtmf52.15.
226 Transfer complete.
ftp: 4996 bytes sent in 0.00Seconds 4996000.00Kbytes/sec.
```

- To verify your file has been sent after ftp> type in **ls** and it will show you the file in the folder and tell you the transfer is complete. After ftp> type in **bye**; it will then display Goodbye. You can now close the program.

Your screen should look like the picture below.



```
C:\WINDOWS\system32\CMD.exe
Microsoft Windows XP [Version 5.1.2600]
(C) Copyright 1985-2001 Microsoft Corp.

C:\Documents and Settings\david>cd\

C:\>cd FUELTAX\DATA

C:\FUELTAX\DATA>ftp
ftp> open ftp.kdor.org
Connected to ftp.kdor.org.
220 Microsoft FTP Service
User (ftp.kdor.org:(none)): XXX
331 Password required for XXX.
Password:
230-Welcome to the Kansas Department of Revenue's FTP Server
230 User XXX logged in.
ftp> put ksbtmf52.15
200 PORT command successful.
150 Opening ASCII mode data connection for ksbtmf52.15.
226 Transfer complete.
ftp: 4996 bytes sent in 0.00Seconds 4996000.00Kbytes/sec.
ftp> ls
200 PORT command successful.
150 Opening ASCII mode data connection for file list.
ack
ksbtmf52.15
sub
226 Transfer complete.
ftp: 23 bytes received in 0.00Seconds 23000.00Kbytes/sec.
ftp> bye
221 Goodbye.

C:\FUELTAX\DATA>_
```